

White Mold Management

Through Center Pivot Chemigation and Ground/Aerial Applications



Pathogen Education

White mold in edible beans is caused by the pathogen *Sclerotinia sclerotiorum*. Infection can start on the stem near the soil line, causing a rapid wilting and death of an entire plant, or it may invade pods or branches, particularly if they are in contact with the soil.

Pathogen Detection

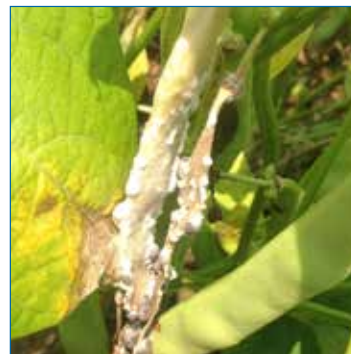
Initial symptoms appear as water-soaked spots (lesions) on stems and pods, starting about a week after row closure and/or flowering. Lesions expand rapidly under moist conditions, and the affected parts become a watery and rotten mass covered by white fungal growth.

After several days, the fungal growth on external plant surfaces forms a white, cushion-shaped structure called a sclerotium. Sclerotium are compact masses of fungus threads, or hyphae, and can be relatively hard, particularly when dry.

Complete and Comprehensive Program

Whether you use center pivot irrigation or crop protection via ground or aerial applications, BioSafe has a program that will control White Mold.

White Mold on Snap Bean Pods



Sclerotinia Sclerotiorum



OxiDate® 2.0

SaniDate® 12.0

Crop Protection

OxiDate 2.0 Application Rates

Application	Dilution Rate	Gallons/ Acre	Application Interval	Directions
Ground	1:100	20	14 days	Application to begin at bloom or first sign of disease
Aerial		5		

1. Apply OxiDate 2.0 by air or ground using the rate of 1:100. Repeat application every 14 days until harvest with first application at bloom.
2. Use a minimum of 5 gallons per acre of total solution when applied by aerial application.
3. Use a minimum of 20 gallons per acre when applied by ground application.
4. A surfactant is recommended at 1-2 pints per 100 gallons of spray solution. Do not use oil based surfactants (crop oil).

Chemigation

SaniDate 12.0 Application Rates

Dilution Rate	Pints/Acre	Application Interval	
1:25,000–1:50,000	1–2	14 days	Volume of water should not exceed 0.20" per acre during application. Pivot should be set on 100% of speed. Solid sets or hand lines application should be at end of irrigation.

1.888.273.3088 | biosafesystems.com

OxiDate® 2.0 and SaniDate® 12.0 are registered trademarks of BioSafe Systems, LLC.
Always read and follow label directions. Photos courtesy of Cornell University.
©2016 Copyright BioSafe Systems LLC. All rights reserved. AG16-49

Results cannot be guaranteed; they may vary and are dependent on many variables. BioSafe Systems is not responsible for improper rates, applications or user error of any kind resulting in damage to crops.



Scan QR Code for
OxiDate 2.0 Label



Scan QR Code for
SaniDate 12.0 Label